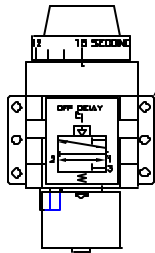
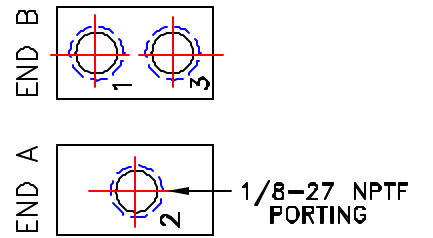
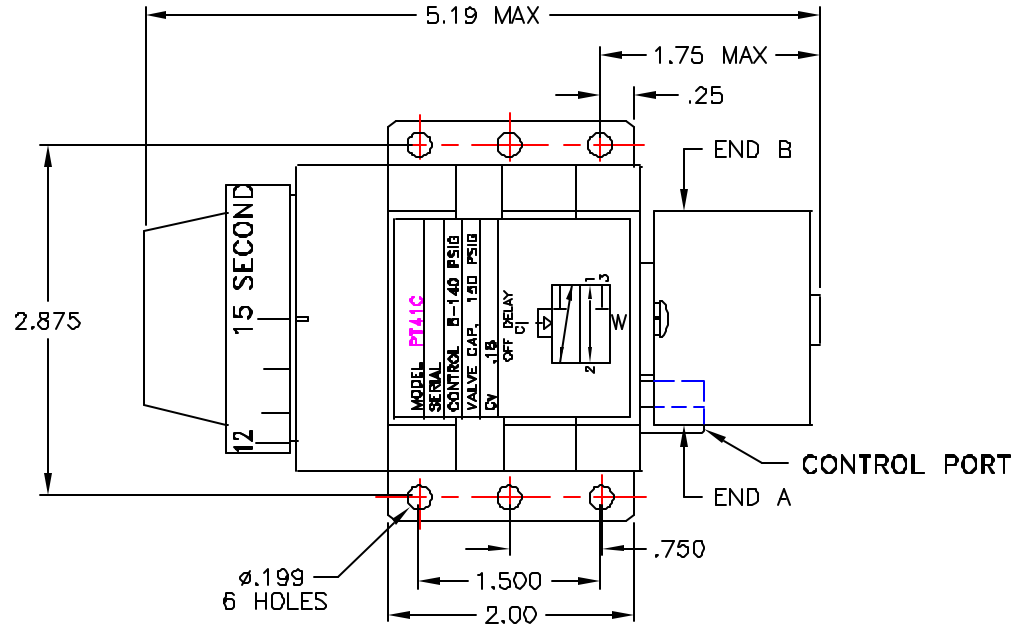
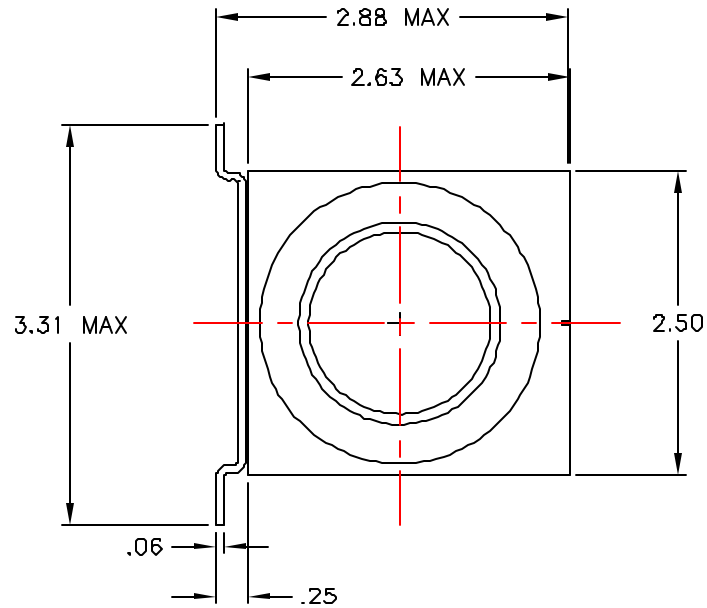


REVISIONS			
REV.	DESCRIPTION	DATE	APPROVAL
A	RELEASE NEW DRAWING	8/15/95	



MOUNT VERTICALLY AS SHOWN



OPERATION

APPLYING SPECIFIED PRESSURE TO THE CONTROL PORT TRANSFERS 3-WAY SPOOL VALVE & ARMS TIMING MECHANISM. VALVE REMAINS IN TRANSFERRED POSITION AS LONG AS CONTROL PORT IS PRESSURIZED. TIMING BEGINS IMMEDIATELY UPON REMOVAL OF AIR PRESSURE. AT THE END OF THE DELAY PERIOD, VALVE RETURNS TO ITS NORMAL POSITION.

TIME RANGE

- 0.1 TO 1 SEC
- 0.5 TO 5 SEC
- 1.5 TO 15 SEC
- 5 TO 50 SEC
- 20 TO 200 SEC
- 1 TO 300 SEC
- 1 TO 10 MIN
- 3 TO 30 MIN
- 6 TO 60 MIN

MODEL

- PT41A
- PT41B
- PT41C
- PT41D
- PT41E
- PT41K
- PT41F
- PT41H
- PT41I

OPERATING PRESSURE

5 TO 140 PSIG

MEDIA

3-5 MICRON FILTERED AIR OR NONAGGRESSIVE GAS NON-LUBRICATED

REPEAT ACCURACY

UP TO 200 SEC $\pm 5\%$
OVER 200 SEC $\pm 10\%$

OPERATING TEMPERATURE

-30°C TO 70°C (-20°F TO 165°F)

OUTPUT VALVE

Cv - 0.25
FLOW @ 100 PSI - 9 CFM
MULTI PURPOSE 3-WAY SPOOL
28" Hg TO 300 PSIG

ELLIS/KUHNKE CONTROLS			
DRAWN BY	EJL	PNEUMATIC TIMER OFF DELAY VERTICAL MOUNT	
CHECKED	8/15/95	SIZE B	FSCM NO.
ISSUED		DWG. NO.	PT41
		SCALE 4:1	SHEET 1 OF 2