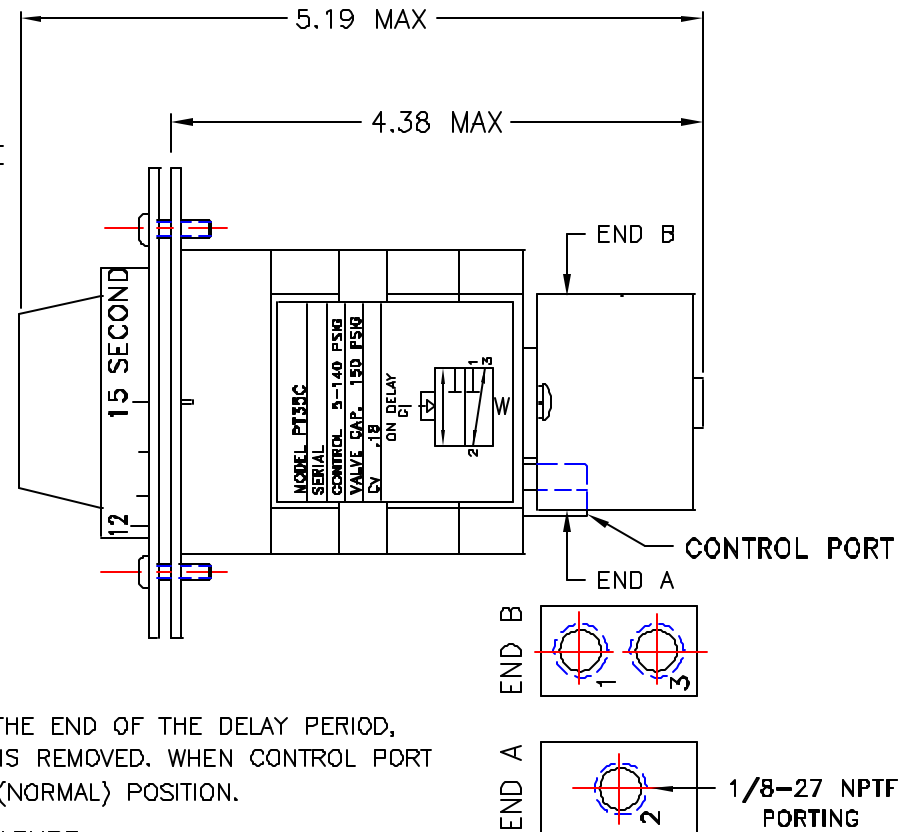
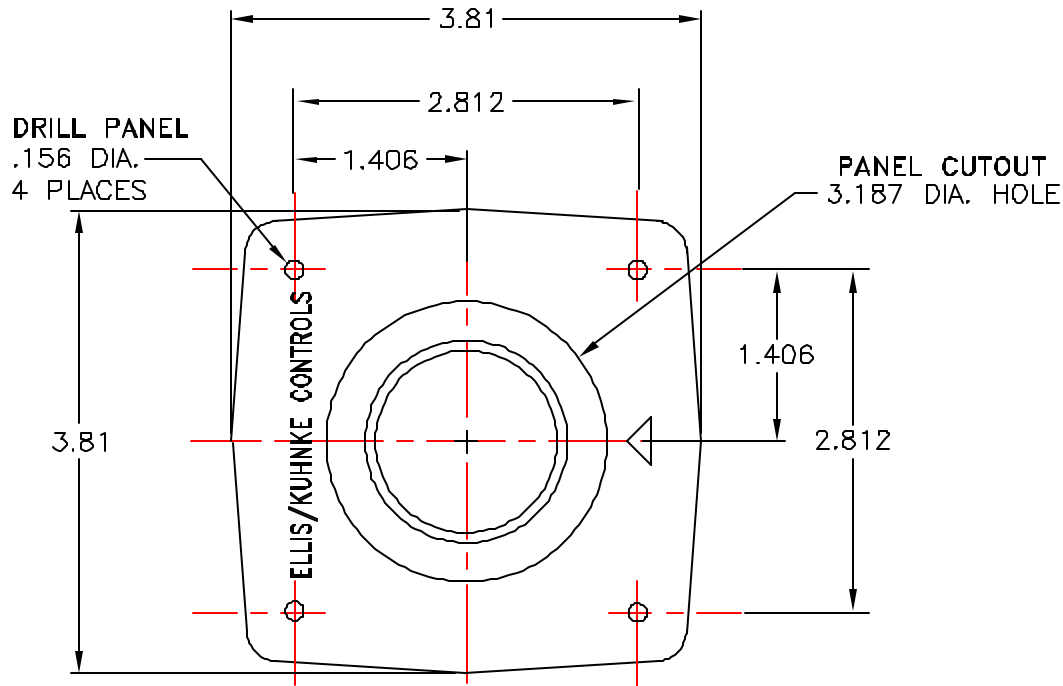


REVISIONS			
REV.	DESCRIPTION	DATE	APPROVAL
A	RELEASE NEW DRAWING	8/15/95	



OPERATION

TIMING BEGINS WHEN SPECIFIED PRESSURE IS APPLIED TO THE CONTROL PORT. AT THE END OF THE DELAY PERIOD, 3-WAY OUTPUT VALVE TRANSFERS AND REMAINS IN THIS POSITION UNTIL PRESSURE IS REMOVED. WHEN CONTROL PORT PRESSURE IS REMOVED, TIMER RESETS AND OUTPUT VALVE RETURNS TO ITS INITIAL (NORMAL) POSITION.

TIME RANGE	MODEL	OPERATING PRESSURE	OPERATING TEMPERATURE
0.1 TO 1 SEC	PT35A	5 TO 140 PSIG	-30°C TO 70°C (-20°F TO 165°F)
0.5 TO 5 SEC	PT35B		
1.5 TO 15 SEC	PT35C	MEDIA	OUTPUT VALVE
5 TO 50 SEC	PT35D	3-5 MICRON FILTERED AIR	Cv - 0.25
20 TO 200 SEC	PT35E	OR NONAGGRESSIVE GAS	FLOW @ 100 PSI - 9 CFM
1 TO 300 SEC	PT35K	NON-LUBRICATED	MULTI PURPOSE 3-WAY SPOOL
1 TO 10 MIN	PT35F	REPEAT ACCURACY	28" Hg TO 300 PSIG
3 TO 30 MIN	PT35H	UP TO 200 SEC ±5%	
6 TO 60 MIN	PT35I	OVER 200 SEC ±10%	

ELLIS/KUHNKE CONTROLS			
DRAWN BY	EJL	PNEUMATIC TIMER ON DELAY PANELMOUNT	
CHECKED	8/15/95	SIZE B	FSCM NO.
ISSUED		DWG. NO.	PT35
		SCALE 4:1	SHEET 1 OF 2