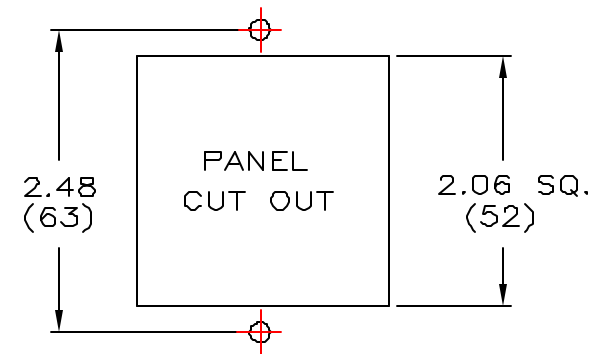
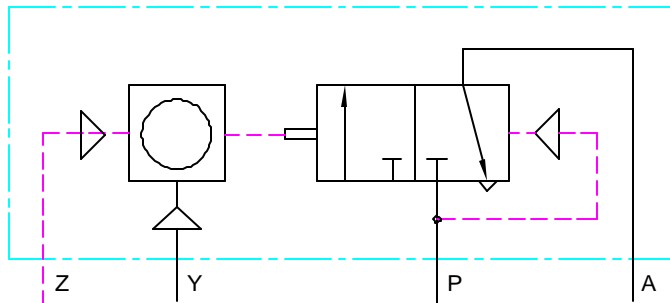


CIRCUIT DIAGRAM



CONTROL CONNECTIONS:

- PORT Z - COUNTER PULSE INPUT
- PORT Y - RESET (PNEUMATIC)
- PORT P - SUPPLY TO 3-WAY VALVE
- PORT A - OUTPUT SIGNAL FROM VALVE

ELLIS/KUHNKE CONTROLS

DRAWN BY EJJ	1/30/01	PNEUMATIC PREDETERMINING COUNTER	
CHECKED		SIZE B	FSCM N1
ISSUED		DWG. NO.	PVA2533
		SCALE 4:1	SHEET 1 OF 2

MODEL PVA2533 PNEUMATIC PREDETERMINING COUNTERS

THIS TYPE OF COUNTER IS USED FOR SELECTING THE NUMBER OF DESIRED OPERATIONS ON A PRODUCTION RUN. THE NUMBER OF OPERATIONS IS SET ON THE LOWER SCALE BY HOLDING DOWN THE WHITE BUTTON AND SETTING COUNT. UPPER SCALE IS A 5 DIGIT TOTALIZER. THE COUNTER OPERATES WITH AN IMPULSE PRESSURE BETWEEN 30-115 PSI AND CAN BE RESET EITHER MANUALLY (VIA A RESET BUTTON) OR BY A PNEUMATIC SIGNAL TO A SPECIFIED PORT.

WHEN THE COUNT REACHES THE LOWER SCALE SETTING, A BUILT IN 3-WAY VALVE IS SWITCHED TO PROVIDE A PNEUMATIC OUTPUT TO STOP AN OPERATION OR SIGNAL THAT A COUNT HAS BEEN REACHED. THE VALVE REMAINS SWITCHED UNTIL THE COUNTER IS RESET.

SINCE THIS DEVICE IS TOTALLY PNEUMATIC, IT CAN BE USED IN HAZARDOUS AREAS, PROVIDING COUNTER, CONTROLLING PROCESS AND REMOTE RESET CAPABILITIES.

TECHNICAL SPECIFICATIONS

OPERATING PRESSURE:
30-115 PSI

PORT CONNECTIONS:
10-32 (M5) THREADS

MEDIA:
DRY FILTERED AIR

CONTROL CONNECTIONS:
PORT Z - COUNTER PULSE INPUT
PORT Y - RESET (PNEUMATIC)
PORT P - SUPPLY TO 3-WAY VALVE
PORT A - OUTPUT SIGNAL FROM VALVE

DISPLAY:
BLACK WITH WHITE DIGITS
(5 DIGITS PER SCALE)

RESET:
MANUAL BUTTON ON COVER OR
PNEUMATIC SIGNAL OF 180 MS
MINIMUM DURATION

DUTY CYCLE:
CONTINUOUS
MIN PULSE DURATION 8 MS
MIN PAUSE DURATION 10 MS

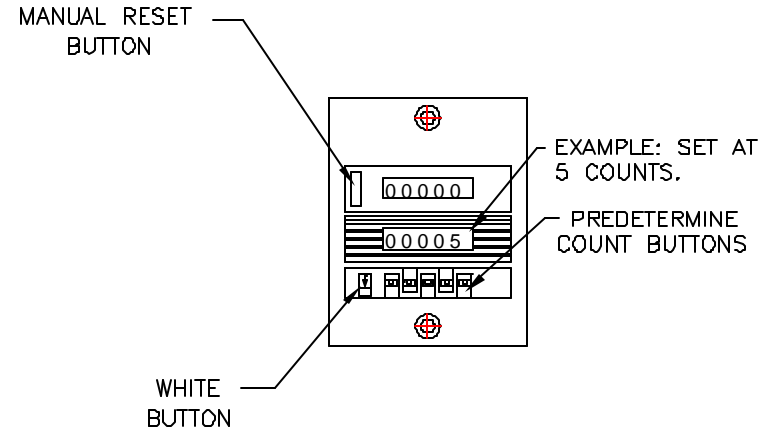
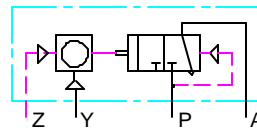
OPERATING AMBIENT:
32°F TO 140°F (0°C TO 60°C)

WEIGHT:
4 OUNCES

MATERIALS:
MOLDED BODY

PANEL CUT OUT:
2 1/16 INCHES SQUARE
2 MOUNTING HOLES REQ.
MTG. HARDWARE INCLUDED

CIRCUIT DIAGRAM:



NOTE: TO SET PREDETERMINED COUNT HOLD DOWN WHITE BUTTON (DIRECTION INDICATED BY ARROW). THEN DEPRESS PREDETERMINE COUNT BUTTONS TO ACHIEVE REQUIRED AMOUNT. CORRESPONDING DIGIT WILL ADVANCE ONE COUNT EVERY TIME DEPRESSED. LOWEST COUNT MUST BE AT FAR RIGHT DIGIT.

ELLIS/KUHNKE CONTROLS					
DRAWN BY	EJL	1/30/01	PNEUMATIC PREDETERMINING COUNTER		
CHECKED			SIZE	FSCM NO.	DWG. NO.
ISSUED			B		PVA2533
			SCALE	4:1	SHEET 2 OF 2